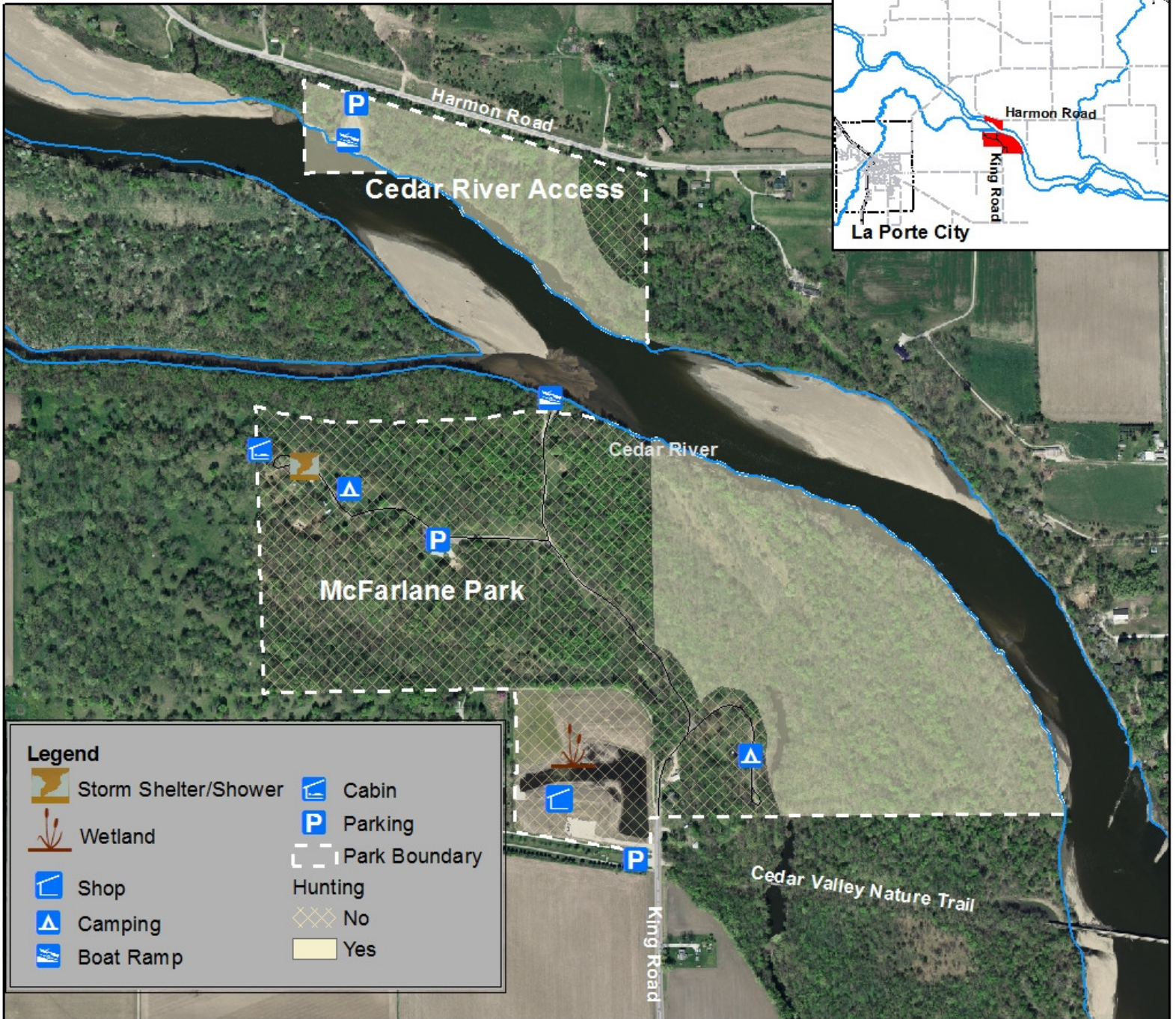
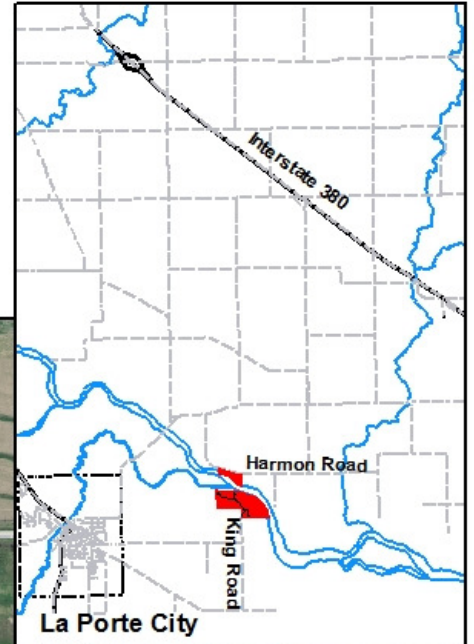


McFarlane Park and Cedar River Access



Managed by
 Black Hawk County Conservation Board
 1346 Airline Highway
 Waterloo, IA 50703
 (319) 433-PARK (7275)
www.blackhawkcountyparks.com

The Cedar River Access (26 acres) is open to public hunting and includes a boat ramp. McFarlane Park (150 acres) provides campgrounds, a shelter, playgrounds, shower facilities, and one furnished cabin for rent. The area provides recreational opportunities such as hunting, fishing, hiking, and wildlife viewing.



- Legend**
- Storm Shelter/Shower
 - Cabin
 - Wetland
 - Parking
 - Shop
 - Park Boundary
 - Camping
 - Hunting: No (diagonal grid), Yes (solid yellow)
 - Boat Ramp

0 0.04 0.08 0.16 0.24 0.32 0.4 Miles

DISCLAIMER:
 This map does not represent a survey, no liability is assumed for the accuracy of the data delineated herein, either expressed or implied by Black Hawk County, the Black Hawk County Assessor, or their employees. This map is compiled from official records including plats, surveys, recorded deeds, and contracts, and only contains information required for local government purposes. See the recorded documents for more detailed legal information. 2/10/2014, J. Weimer 18,700