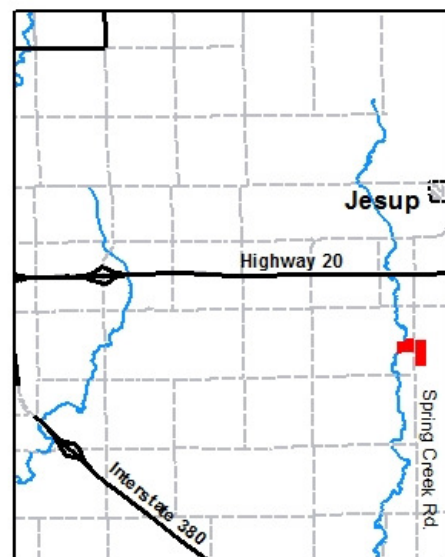
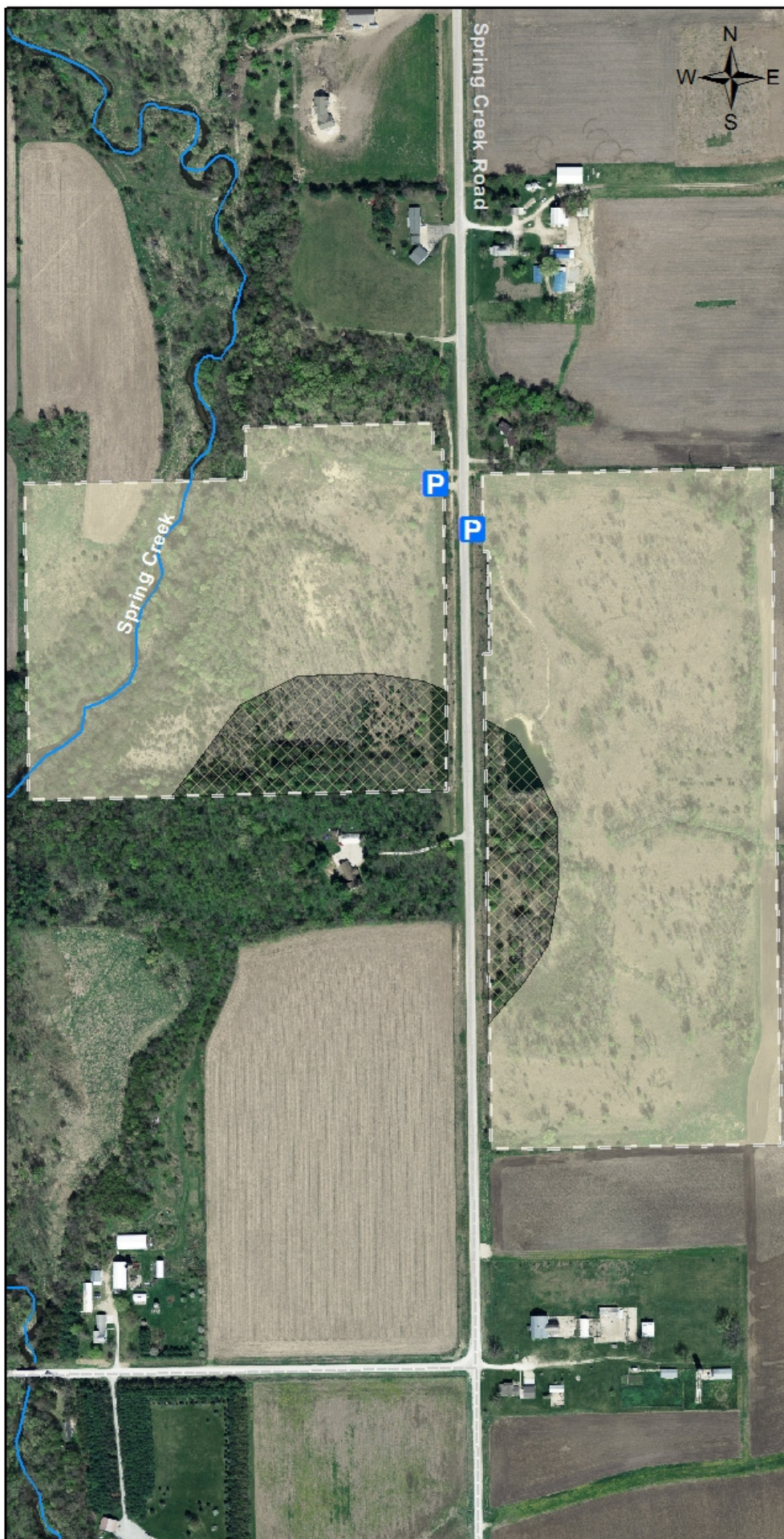


Edgerton Reserve and Franta Wildlife Area

Managed by
 Black Hawk County Conservation Board
 1346 Airline Highway
 Waterloo, IA 50703
 (319) 433-PARK (7275)
www.blackhawkcountyparks.com

Edgerton Reserve is located to the west of Spring Creek Rd. and provides 32 acres of mixed woodland and open areas.

Franta Wildlife Area is located just to the east and provides 40 acres of prairie with some timber along with a small pond. Both areas provide public hunting, fishing, nature exploration and hiking.



Legend

P Parking

Hunting

No

Yes

Park Boundary

0 0.025 0.05 0.1 0.15 0.2 0.25 Miles

DISCLAIMER:
 This map does not represent a survey, no liability is assumed for the accuracy of the data delineated herein, either expressed or implied by Black Hawk County, the Black Hawk County Assessor, or their employees.
 This map is compiled from official records including plats, surveys, recorded deeds, and contracts, and only contains information required for local government purposes. See the recorded documents for more detailed legal information. 2/20/2014 S. Tesch 1:5,000