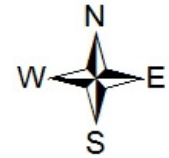
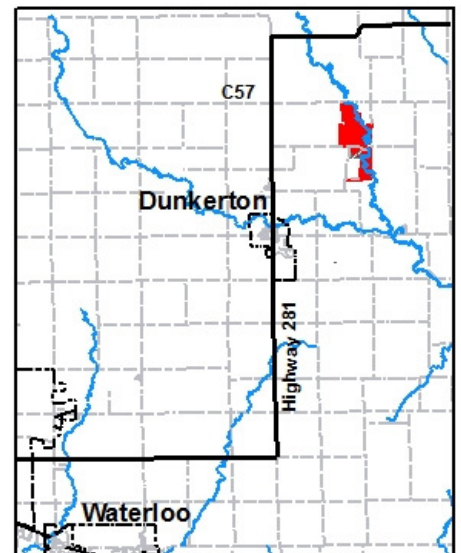


Bruggeman Wildlife Area

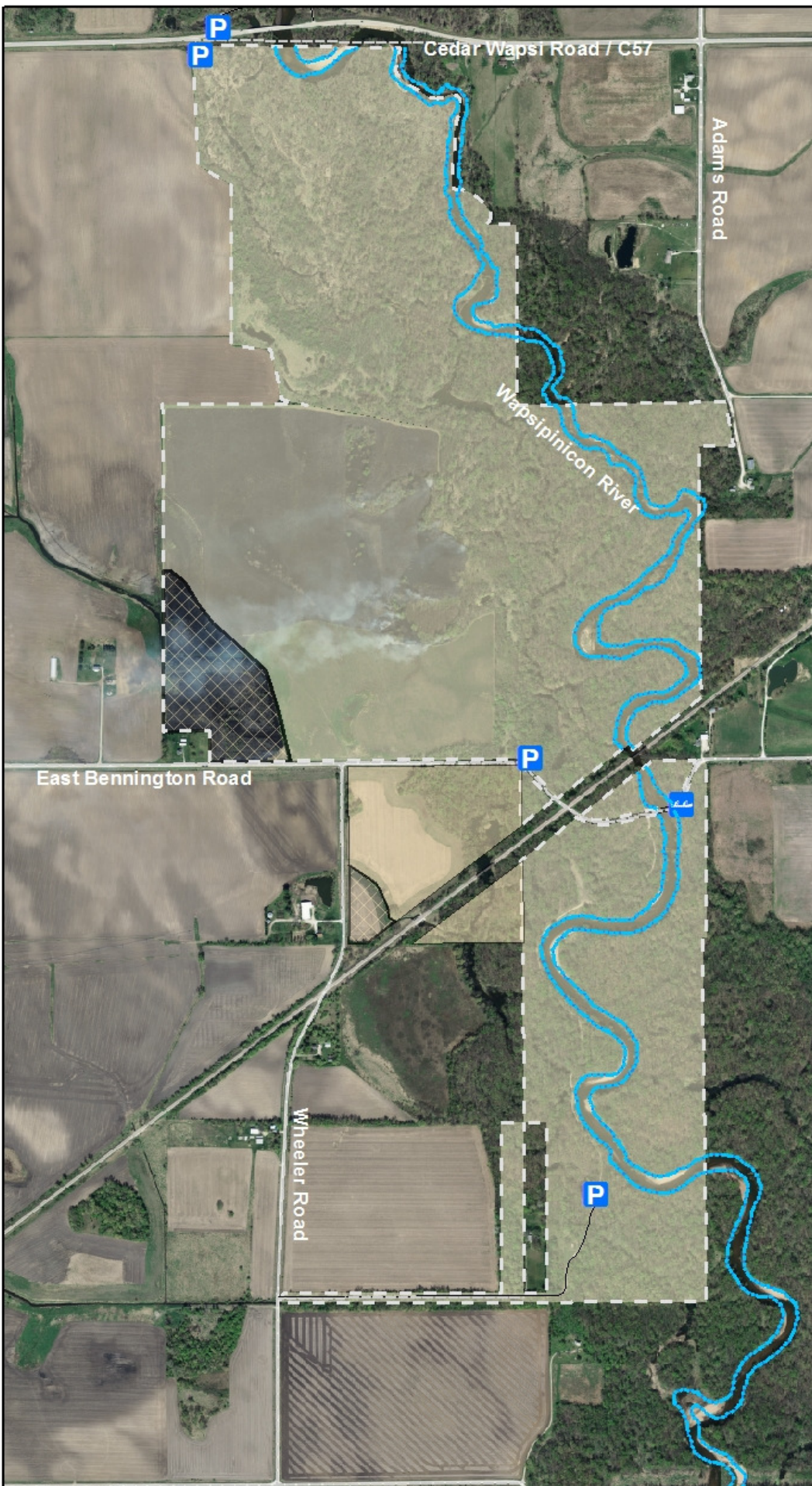
Managed by
 Black Hawk County Conservation Board
 1346 Airline Highway
 Waterloo, IA 50703
 (319) 433-PARK (7275)
www.blackhawkcountyparks.com



The park consists of 359 acres of flood plain forest along with 128 acres of quality prairie for a total of 487 acres of wildlife habitat. The area also provides access to the Wapsipinicon River Water Trail. Hunting, fishing, hiking, paddling and bird watching opportunities abound within this wildlife area.



Legend		
	water	Hunting
	Parking	No
	Water Access	Yes
	Park Road	
	Park Boundary	



DISCLAIMER:
 This map does not represent a survey; no liability is assumed for the accuracy of the data delineated herein, either expressed or implied by Black Hawk County, the Black Hawk County Assessor, or their employees. This map is compiled from official records including plats, surveys, recorded deeds, and contracts, and only contains information required for local government purposes. See the recorded documents for more detailed legal information. 2/18/14. S. Tesh 1:13,000